

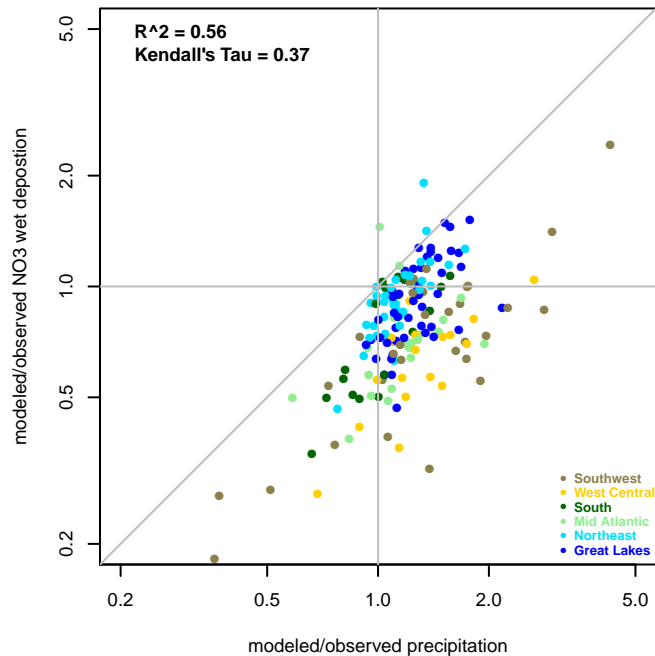
Figure. S8.

Right: Scatter plot of the ratio of observed/modeled precipitation versus the ratio of observed/modeled NO_3^- wet deposition. The colors indicate the various regions defined in Fig. S5.

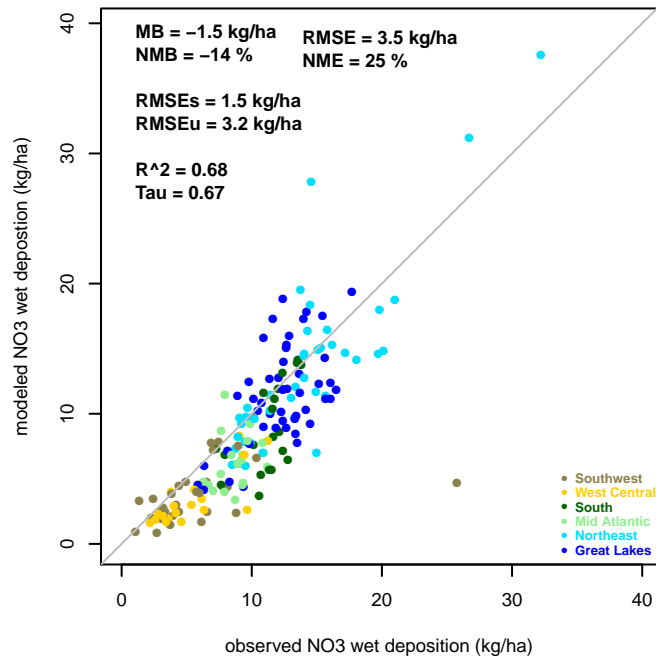
Middle: Scatter plot of NTN observed versus CMAQ 12-km estimated NO_3^- wet deposition. The colors indicate the various regions defined in Fig. S5.

Left: Scatter plot NTN observed versus CMAQ 12-km estimated NO_3^- wet deposition (kg/ha) that has been adjusted for precipitation bias. The colors indicate the various regions defined in Fig. S5.

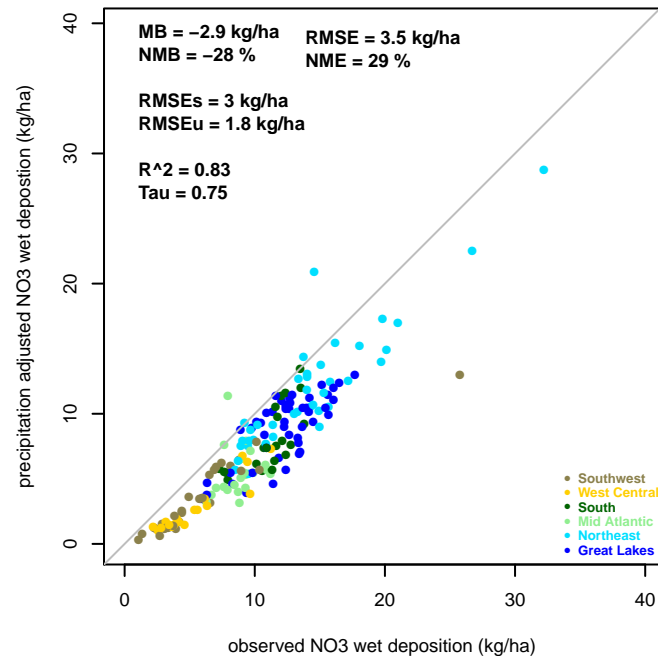
2002 : Modeled/Observed Precip. vs. Wet Dep. NO3



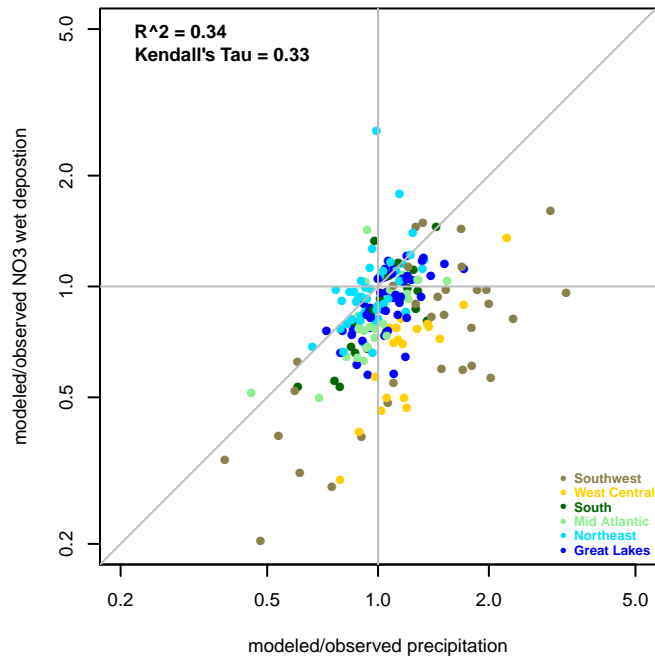
2002 : Observed vs Modeled Wet Dep. NO3



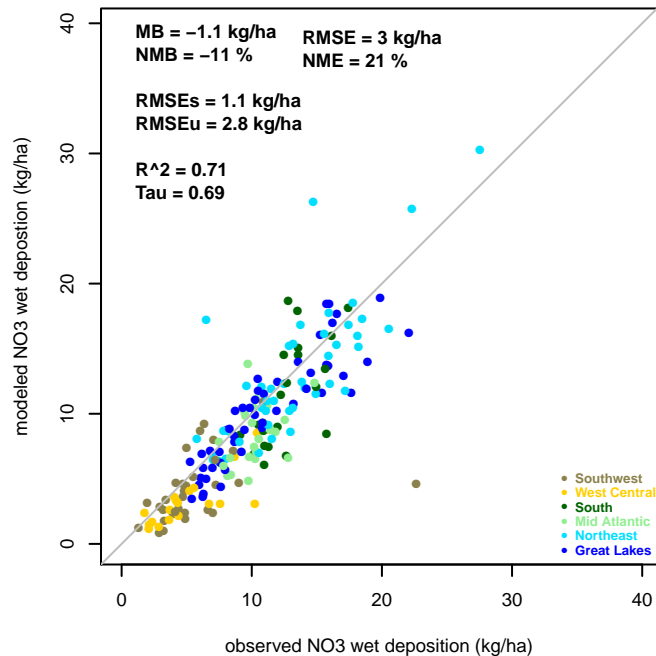
2002 : Observed vs Precip. Adjusted Wet Dep. NO3



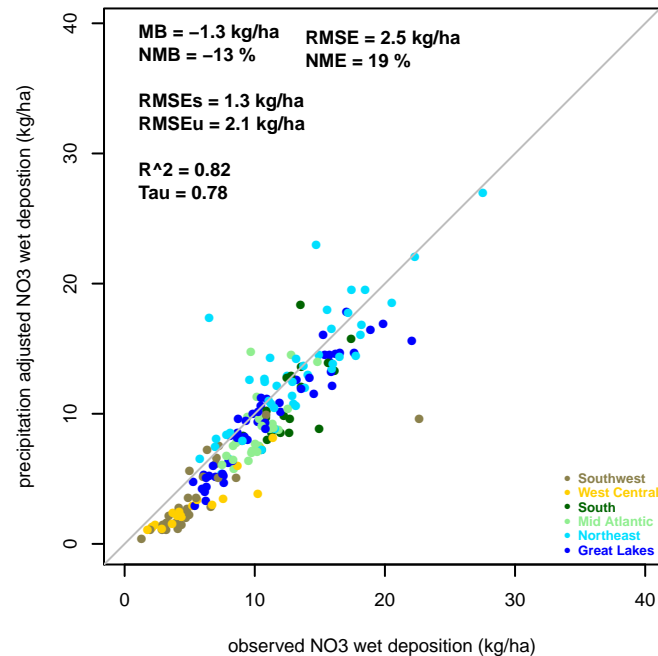
2003 : Modeled/Observed Precip. vs. Wet Dep. NO3



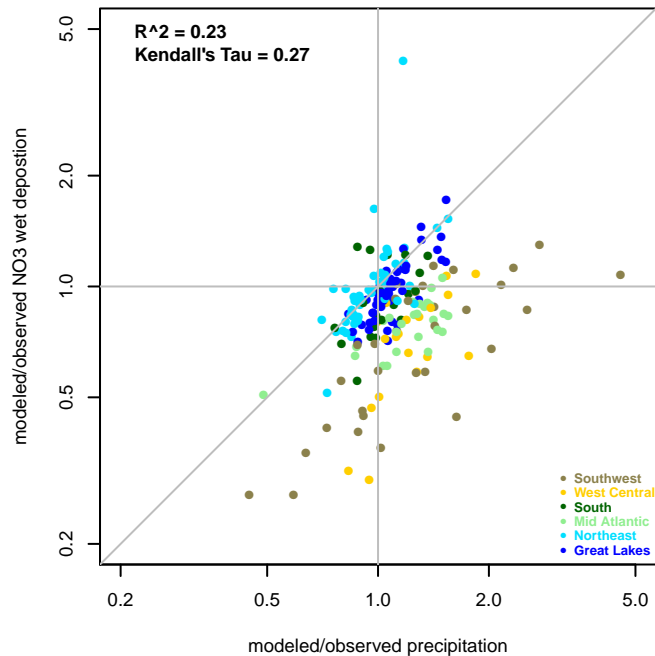
2003 : Observed vs Modeled Wet Dep. NO3



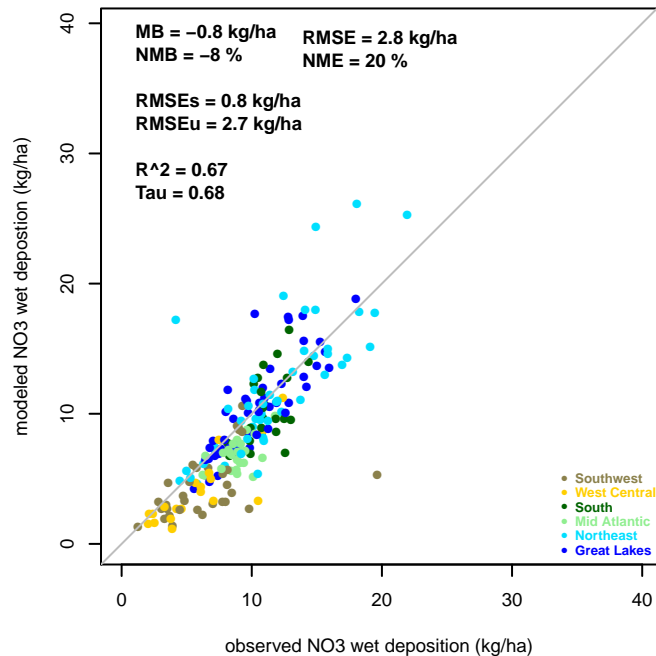
2003 : Observed vs Precip. Adjusted Wet Dep. NO3



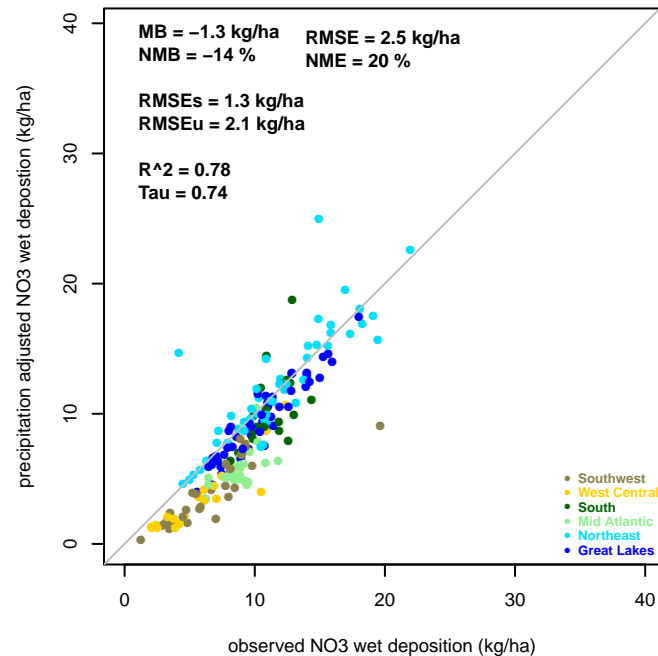
2004 : Modeled/Observed Precip. vs. Wet Dep. NO3



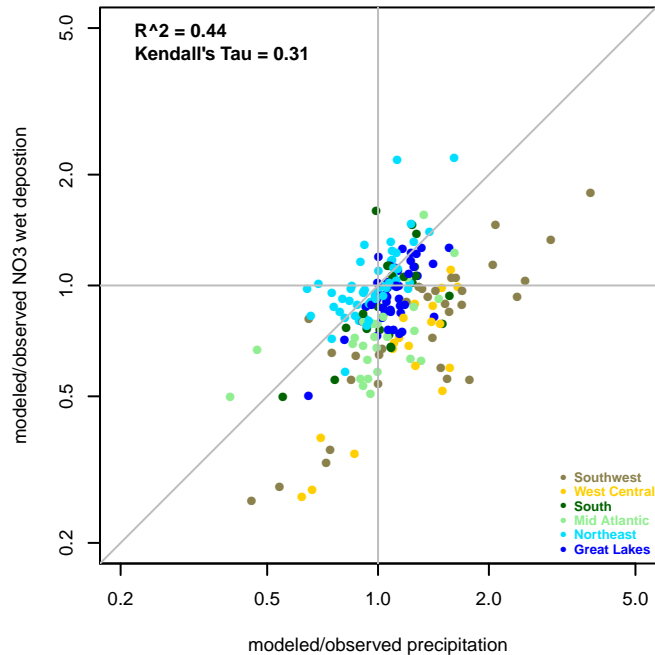
2004 : Observed vs Modeled Wet Dep. NO3



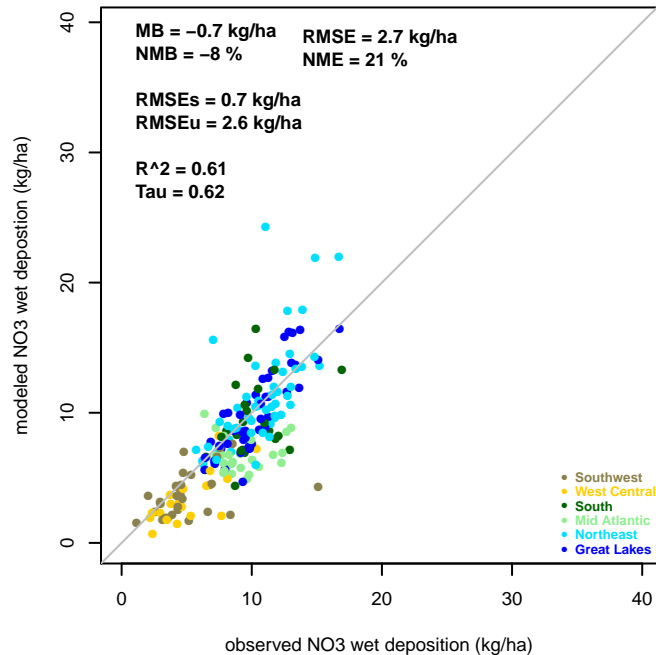
2004 : Observed vs Precip. Adjusted Wet Dep. NO3



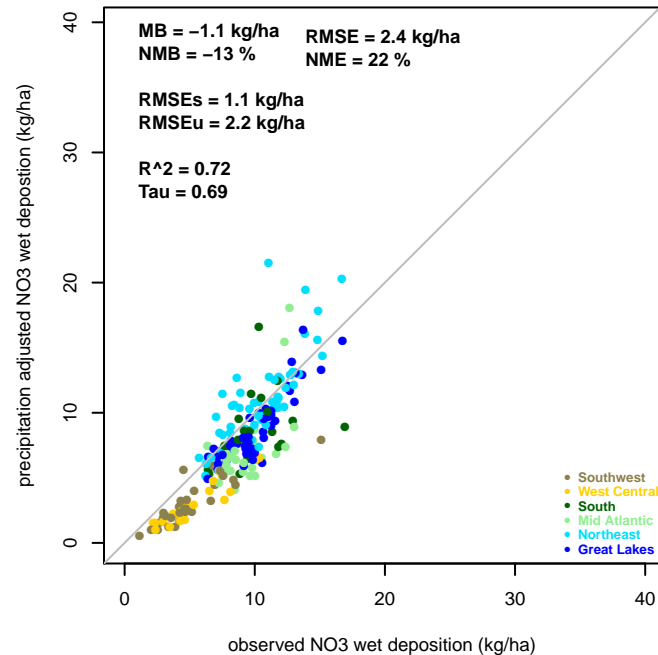
2005 : Modeled/Observed Precip. vs. Wet Dep. NO3



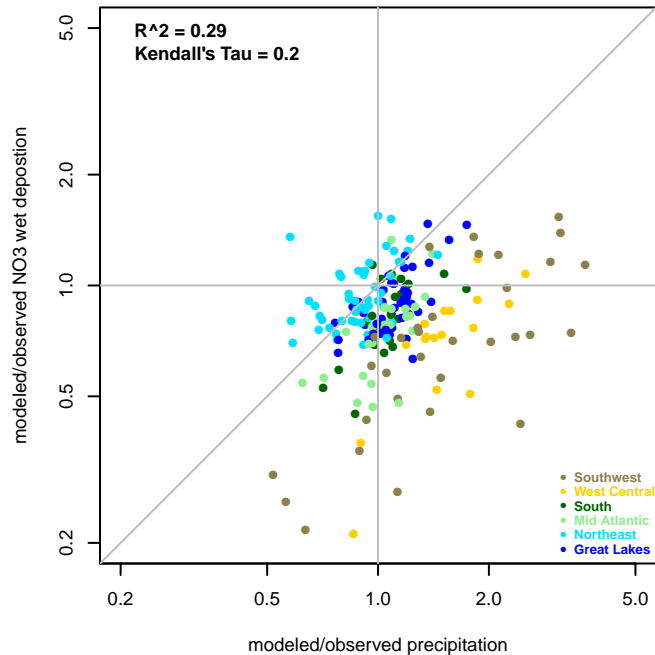
2005 : Observed vs Modeled Wet Dep. NO3



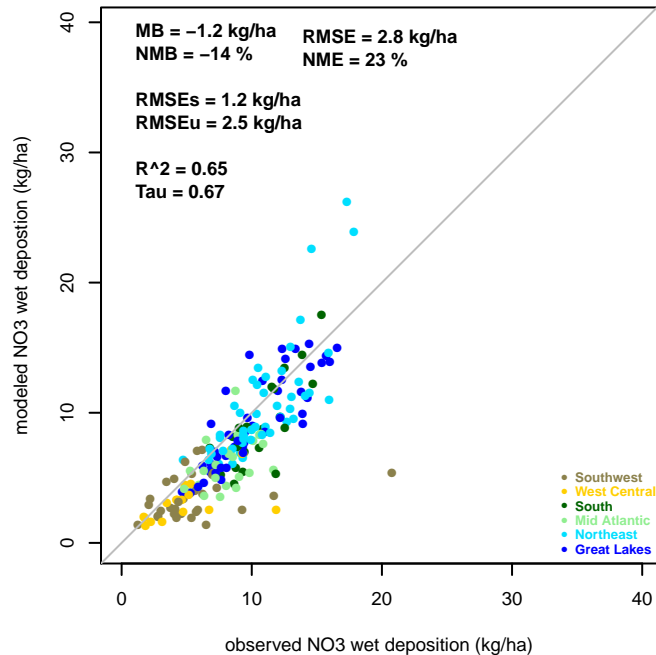
2005 : Observed vs Precip. Adjusted Wet Dep. NO3



2006 : Modeled/Observed Precip. vs. Wet Dep. NO3



2006 : Observed vs Modeled Wet Dep. NO3



2006 : Observed vs Precip. Adjusted Wet Dep. NO3

